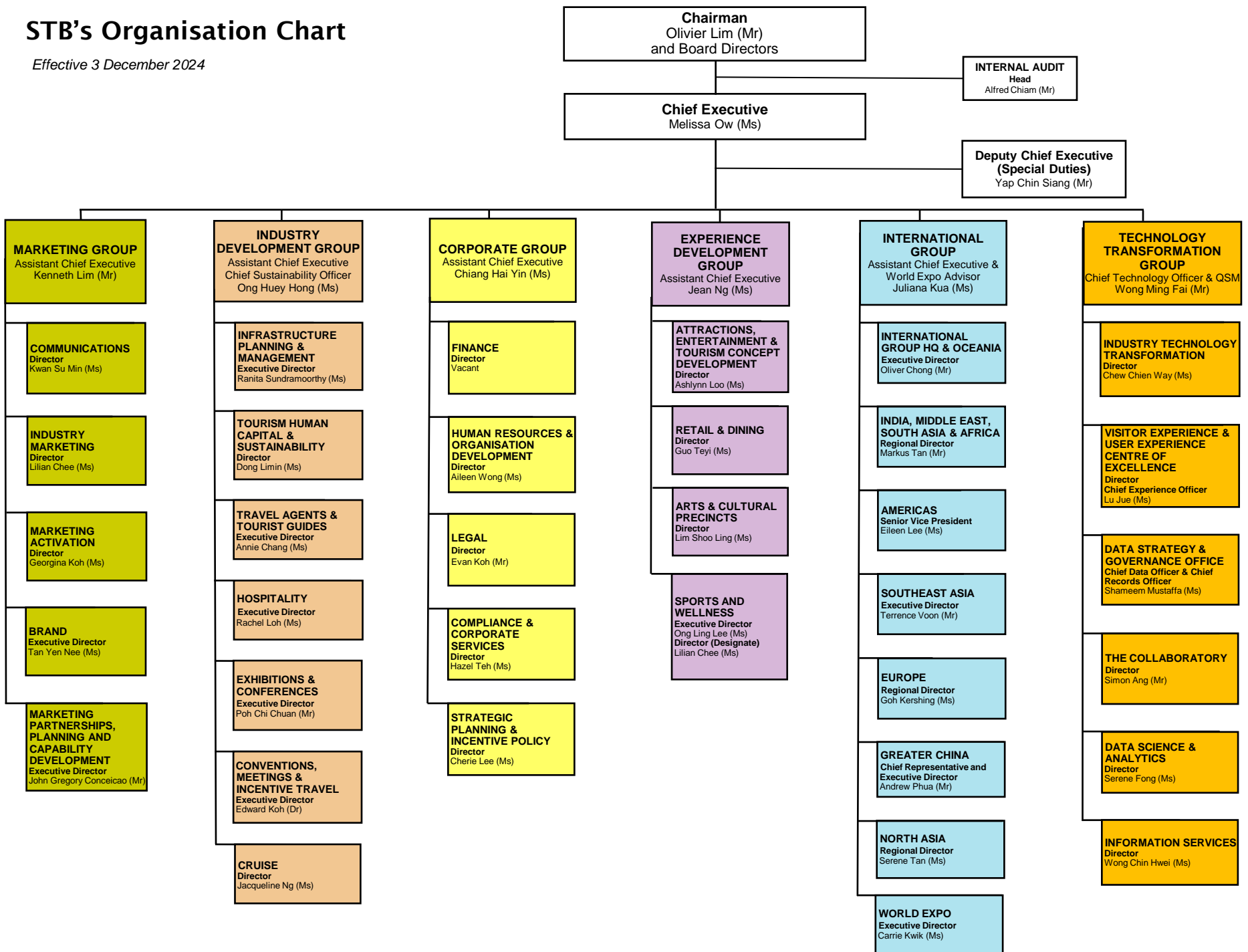


STB's Organisation Chart

Effective 3 December 2024



Chairman
Olivier Lim (Mr)
and Board Directors

INTERNAL AUDIT
Head
Alfred Chiam (Mr)

Chief Executive
Melissa Ow (Ms)

**Deputy Chief Executive
(Special Duties)**
Yap Chin Siang (Mr)

MARKETING GROUP
Assistant Chief Executive
Kenneth Lim (Mr)

COMMUNICATIONS
Director
Kwan Su Min (Ms)

INDUSTRY MARKETING
Director
Lilian Chee (Ms)

MARKETING ACTIVATION
Director
Georgina Koh (Ms)

BRAND
Executive Director
Tan Yen Nee (Ms)

**MARKETING PARTNERSHIPS,
PLANNING AND CAPABILITY
DEVELOPMENT**
Executive Director
John Gregory Conceicao (Mr)

INDUSTRY DEVELOPMENT GROUP
Assistant Chief Executive
Chief Sustainability Officer
Ong Huey Hong (Ms)

**INFRASTRUCTURE PLANNING &
MANAGEMENT**
Executive Director
Ranita Sundramoorthy (Ms)

**TOURISM HUMAN CAPITAL &
SUSTAINABILITY**
Director
Dong Limin (Ms)

**TRAVEL AGENTS &
TOURIST GUIDES**
Executive Director
Annie Chang (Ms)

HOSPITALITY
Executive Director
Rachel Loh (Ms)

**EXHIBITIONS &
CONFERENCES**
Executive Director
Poh Chi Chuan (Mr)

**CONVENTIONS,
MEETINGS & INCENTIVE TRAVEL**
Executive Director
Edward Koh (Dr)

CRUISE
Director
Jacqueline Ng (Ms)

CORPORATE GROUP
Assistant Chief Executive
Chiang Hai Yin (Ms)

FINANCE
Director
Vacant

**HUMAN RESOURCES &
ORGANISATION DEVELOPMENT**
Director
Aileen Wong (Ms)

LEGAL
Director
Evan Koh (Mr)

**COMPLIANCE &
CORPORATE SERVICES**
Director
Hazel Teh (Ms)

**STRATEGIC PLANNING &
INCENTIVE POLICY**
Director
Cherie Lee (Ms)

EXPERIENCE DEVELOPMENT GROUP
Assistant Chief Executive
Jean Ng (Ms)

**ATTRACTIONS,
ENTERTAINMENT &
TOURISM CONCEPT DEVELOPMENT**
Director
Ashlynn Loo (Ms)

RETAIL & DINING
Director
Guo Teyi (Ms)

ARTS & CULTURAL PRECINCTS
Director
Lim Shoo Ling (Ms)

SPORTS AND WELLNESS
Executive Director
Ong Ling Lee (Ms)
Director (Designate)
Lilian Chee (Ms)

INTERNATIONAL GROUP
Assistant Chief Executive &
World Expo Advisor
Juliana Kua (Ms)

INTERNATIONAL GROUP HQ & OCEANIA
Executive Director
Oliver Chong (Mr)

**INDIA, MIDDLE EAST,
SOUTH ASIA & AFRICA**
Regional Director
Markus Tan (Mr)

AMERICAS
Senior Vice President
Eileen Lee (Ms)

SOUTHEAST ASIA
Executive Director
Terrence Voon (Mr)

EUROPE
Regional Director
Goh Kershing (Ms)

GREATER CHINA
Chief Representative and
Executive Director
Andrew Phua (Mr)

NORTH ASIA
Regional Director
Serene Tan (Ms)

WORLD EXPO
Executive Director
Carrie Kwik (Ms)

TECHNOLOGY TRANSFORMATION GROUP
Chief Technology Officer & QSM
Wong Ming Fai (Mr)

INDUSTRY TECHNOLOGY TRANSFORMATION
Director
Chew Chien Way (Ms)

**VISITOR EXPERIENCE &
USER EXPERIENCE CENTRE OF
EXCELLENCE**
Director
Chief Experience Officer
Lu Jue (Ms)

**DATA STRATEGY &
GOVERNANCE OFFICE**
Chief Data Officer & Chief
Records Officer
Shameem Mustafa (Ms)

THE COLLABORATORY
Director
Simon Ang (Mr)

**DATA SCIENCE &
ANALYTICS**
Director
Serene Fong (Ms)

INFORMATION SERVICES
Director
Wong Chin Hwei (Ms)